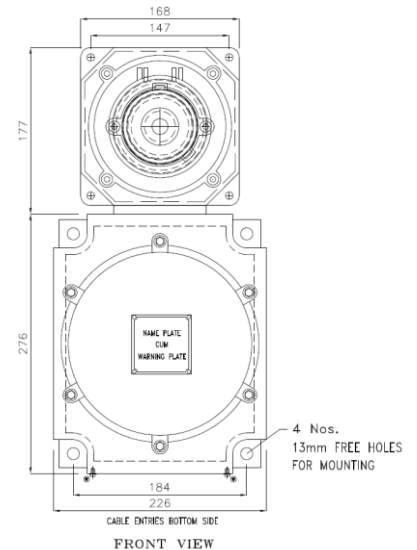




DATA SHEET FOR FLP SWITCH SOCKET (63 A TPN)

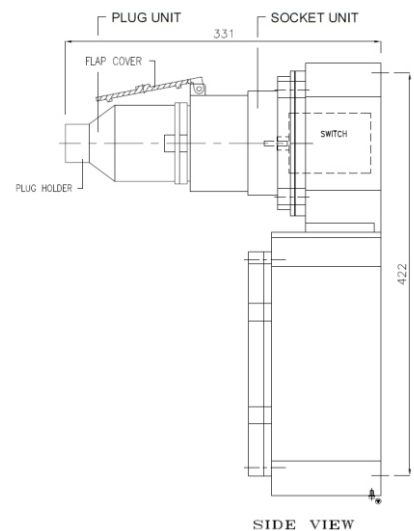
TECHNICAL DATA:

PRODUCT : CAT. NO.- SS/214
ENCLOSURE : FLAME PROOF (Ex -d), Gas Group IIA , IIB
 As per IS/IEC 60079-1 : 2014
PROTECTION : WEATHER PROOF IP – 66 AS PER IS/IEC 60529:2001
 (Reaffirmed 2014)
AREA CLASSIFICATION : Ex db IIA,IIB T6 Gb (EX tb / tc IIIC T85 C Db/Dc
 (ZONE 1 & 2 & Zone 21 & 22)
CERTIFICATION : CIMFR, BIS, PESO
TEMPERATURE CLASS : T6
RATING : 63 AMP 4P+E
VOLTAGE : 415 V AC
MATERIAL : DIE CAST ALUMINIUM ALLOY
FINISH : EPOXY POWDER COATED SHADE AS PER IS: 5
EARTHING : 1 No INTERNAL & 2 No's EXTERNAL
HARDWARE : STAINLESS STEEL
GASKET : 'O' RING ENDLESS GASKET NEOPRENE / SILICON
NAME PLATE : SS NAME PLATE CUM WARNING PLATE
ENTRIES : 2 NOS AT M40 BOTTOM AND 1 NO AT PLUG TOP
 M20/ ½" NPT / EQUIVALENT
SWITCH : 63 AMP 4P 415V
SOCKET : 63 AMP (4P + E)
PLUG TOP : 63 AMP (4P + E)
COMBINATION : SWITCH SOCKET WITH MCB PLUG & SOCKET 63 AMP
 SWITCH SOCKET WITH ELCB 63 AMP 4P,
 SWITCH SOCKET WITH MCCB 63 AMP 4P,
 SWITCH SOCKET WITH RCBO 63AMP,
FLAP : RUBBER FLAP WILL BE PROVIDED FOR SOCKET
TERMINAL : 4 NOS OF UPTO 50 SQ.MM BUSBAR TYPE TERMINAL
INTERLOCK : INTERLOCKING ARRANGEMENT SUCH
 AS THE PLUG CAN NOT BE REMOVED
 WHEN THE SWITCH IS IN "ON" POSITION AND
 CAN BE WITHDRAW ONLY
 WHEN THE SWITCH IS IN "OFF" POSITION.



OPTIONS

SR.NO	PARTICULAR	OPTIONS
1.	MATERIAL OF CONSTRUCTION	STAINLESS STEEL
2.	GLAND & PLUG	BRASS / SS / ALUMINIUM
3.	COLOUR SHADE	631, 632, 355, 7031, 7032 etc.
4.	CANOPY	M.S POWDER COATED / FRP



NOTE:- SWITCH SOCKET CAN BE PROVIDED WITH ELCB / RCBO / MCCB COMBINATION AS PER CUSTOMER REQUIREMENT!